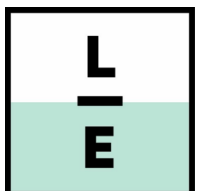


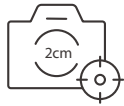
# FJD Trion™ P1

LiDAR SCANNER



## NEW DIMENSIONS UNFOLD

Whether you are a seasoned pro or just 3D-curious, a walk around the site with the P1 lets you digitize your environment quickly and accurately.



Relative Accuracy  
Up to 2 cm



Scanning Range  
40 m @ 10% reflectivity  
70 m @ 80% reflectivity



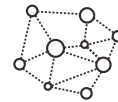
LiDAR FOV  
360° × 59°



Points Per Second  
200,000



Lightweight and Portable  
1 kg / 2.2 lbs



Real-time Point Cloud  
Visualize as you scan

## EASY REALITY CAPTURE

Indoor, outdoor, underground, all day long

Powerful SLAM technology enables the P1 to work in direct sunlight or even at night, in locations that may be inaccessible with traditional methods.



Compact yet mighty

Weighing in at only 1 kg or slightly over 2 lbs, the P1 fits in a messenger bag and can work all day with easy battery swaps, recreating your environment in minutes.



# REBUILD WHAT YOU SEE

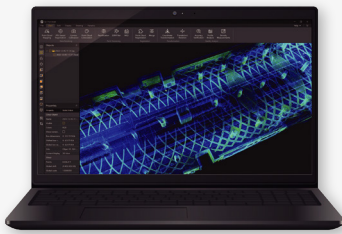
Advanced SLAM technology does not have to cost a fortune. No more complicated instrument calibration or lengthy workflows processing point cloud data. The plug-and-play design and accessible price point of the P1 empowers you to explore boundless creativity, streamline data processing, and digitize assets with ease.

## Workflow



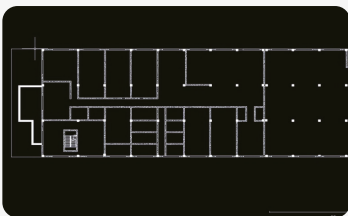
### Capture

Walk, scan, and view point cloud data in real-time.



### Analyze

Process point cloud data in las, pcd, pts, ply using Trion Model. Scan to post-processing time ratio is about 3:1.



### Deliver

Calculate distance, area, and volume. Create contours, floor plans, forest analyses, and 3D models like BIM.

## CONFIGURATIONS

### Camera

Capture RGB videos with camera.

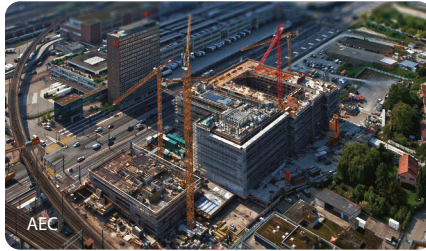


### RTK

Generate georeferenced point cloud data.



# APPLICATION SCENARIOS



## QUICK SPECS

Weight	1 kg (excluding camera & baseplate)	Power Source	Rechargeable Grip Battery
Dimensions	160 × 120 × 270 mm (excluding camera)	Power Supply	10.8 V, 3 A
Relative Accuracy	Up to 2 cm* <small>*Tested in experimental conditions</small>	Power Supply Interface	Type-C
Scanning Range	40 m @10% reflectivity 70 m @80% reflectivity	Data Transmission	USB-3.0
Laser Wavelength	905 nm	Power Consumption	12 W (Scanner only)
Laser Rating	Eye-safety Class I	Battery Life	2 h (Grip Battery, Room Temperature, Scanner only)
Field of View	360° x 59°	Wi-Fi	2.4, 5 GHz
Number of Laser Heads	1	Internal Memory	512 GB
Point Rate	200,000 points/second	Operating Temperature	-10 °C ~ 45 °C
Point Cloud Processing	Real-time processing	Camera Resolution	5760 × 2880 @ 30 fps
Point Cloud Display	Real-time point cloud preview	Camera Field of View (FOV)	180°

Contact your local FJDynamics Authorized Distribution Partner for more information.

OmniaSphere Srl  
Via Fornace 33  
46023 Gonzaga (MN) - Italy  
[www.omniasphere.com](http://www.omniasphere.com)  
[info@omniasphere.com](mailto:info@omniasphere.com)



+39 080 645 8405  
+39 333 703 0168  
[info@enzolaterza.it](mailto:info@enzolaterza.it)  
Via Anna Frank 22 - 70017 Putignano (BA)  
[www.enzolaterza.it](http://www.enzolaterza.it)

CREATE FOR A BETTER WORLD

Copyright © FJDynamics. All rights reserved.